

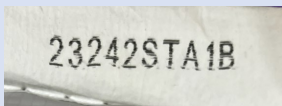


HOW TO READ A TRIPLE CROWN DATE CODE

FEED BAGS:

The only code on a Triple Crown feed bag that represents the date of production for the feed is the code printed on the strip that seals the bottom of the bag. These codes signify the day the feed was made. If stored properly, the feed will be safe and meet guarantees for up to six months from this date.

Triple Crown is produced by a few different manufacturing facilities throughout the United States and all date codes will always be printed on the bottom seal strip of the bag. However, how you read the actual date code will vary depending on where you live. Here are the ways a date code may appear by manufacturer:



Manufactured by PURINA

EXAMPLE: 23242STA1B

(printed on the tape on bottom of bag)

1st-2nd digits: 23 represents the last two digits of the year (2023)

3rd-5th digits: 242 represents the three-digit Julian date* (242nd day of year; Aug 29)

6th-8th letters: STA represents the three-digit plant code (XXXX)

9th digit: 1 represents the shift product was packaged

10th digit: B represents optional plant information

This example is August 29, 2023 at Statesville, NC



Manufactured by CONSUMER SUPPLY

EXAMPLE: 04252023— center group of numbers

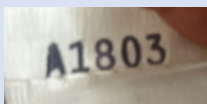
(printed on the tape on bottom of bag)

1st-2nd digits: 04 represents the two-digit month of the year (04 = April)

3rd-4th digits: 25 represents the two-digit day of the month (25th day of month; April 25)

5th-8th letters: 2023 represents the four-digit year (2023)

This example is April 25, 2023



Manufactured by BLUE SEAL

EXAMPLE: A1803

(printed on the tape on bottom of bag)

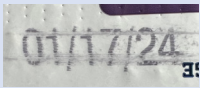
1st letter: A represents the plant code (Arcade)

2nd-4th digits: 180 represents the three-digit Julian date* (180th day of year; June 28)

5th digit: 3 represents the last digit of the year (2023)

This example is June 28, 2023 at Arcade, NY

*Julian date calendar can be found here: <https://www.typecalendar.com/julian-date>



FORAGE BAGS:

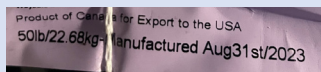
StressFree® and Safe Starch® Fortified Forages, Grass Forage, Alfalfa Forage Blend

EXAMPLE: 01/17/24

(printed on the side of bag)

mm/dd/yyyy

This example is January 17, 2024



FORAGE CUBES:

Timothy Balance® Cubes, Alfalfa Cubes, Alfalfa-Timothy Cubes

EXAMPLE: Aug31st/2023

(printed on the feed tag sewn on bag)

Standard calendar date: August 31, 2023



NATURALS RICE BRAN, EAST COAST:

EXAMPLE: 1076D

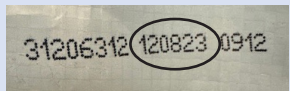
(printed on the tape on bottom of bag)

1st digit: 1 reflects the year of 2021

2nd-4th digits: 076 reflects the day of the year (76th day)

5th letter: reflects the mill (Dalton)

This example is March 16, 2021



NATURALS RICE BRAN, MID WEST/WEST COAST:

EXAMPLE: 120823

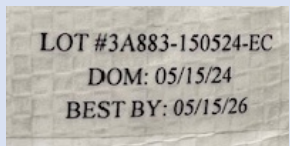
(printed on the front of bag)

1st-2nd digits: 12 reflects the month of March

3rd-4th digits: 08 reflects the day of the month (31st day)

5th-6th digits: 23 reflects the year of 2021

This example is December 8, 2023

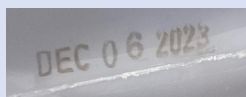


NATURALS GOLDEN GROUND FLAX:

EXAMPLE: DOM: 05/15/24

(printed on sticker on bag)

Standard calendar date: May 15, 2024

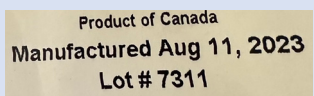


ESSENTIAL OMEGA BLEND:

EXAMPLE: DEC 06 2023

(printed on bottom of jug)

Standard calendar date: December 6, 2023

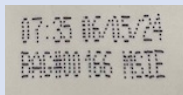


NATURALS WHOLE & STEAM CRIMPED OATS:

EXAMPLE: Aug 11, 2023

(printed on feed tag sewn on bag)

Standard calendar date: August 11, 2023



FUNCTIONAL WAFERS:

EXAMPLE: 06/05/24

(printed on the middle back of bag)

Standard calendar date: June 5, 2024